



Keilwellen & Muffen

Splined Shafts & Sleeves

Lagerprogramm

Stock Programme

Inhalt

Content

Keilwellen
Splined Shafts

• Seiten | pages J 1



Keilwellen-Muffen - rund
Splined Sleeves - Round

• Seiten | pages J 1



Keilwellen-Muffen - Flansch
Splined Sleeves - Flange

• Seiten | pages J 2



Keilwellen-Muffen - Flansch, gebohrt
Splined Sleeves - Flange, with Holes

• Seiten | pages J 2



Keilwellen & Muffen

Splined Shafts & Sleeves

Sonderanfertigungen

Custom Made Parts

Inhalt

Content

Nach Zeichnung und Kundenwunsch fertigen wir Wellen und Naben in zahlreichen Ausführungen:

Acc. to drawing and customer requirement, we manufacture shafts and hubs in numerous designs:

Wellen und Naben

- Mit Mehrkeilprofilen, Kerbverzahnungen, Einzelnuten
- Außen-Profile bis max. \varnothing 180 mm
- Länge bis max. 1 600 mm
- Gefräst und geschliffen

Shafts and Hubs

- With multi-spline profiles, serrations, single groove
- Outer profile up to max. \varnothing 180 mm
- Length up to max. 1 600 mm
- Milled and ground

Wellen und Naben

- Innen-Profile, Räumen:
- Werkzeug- \varnothing max. 90 mm
 - Werkstück- \varnothing max. 400 mm
 - Räumlänge max. 200 mm

Shafts and Hubs

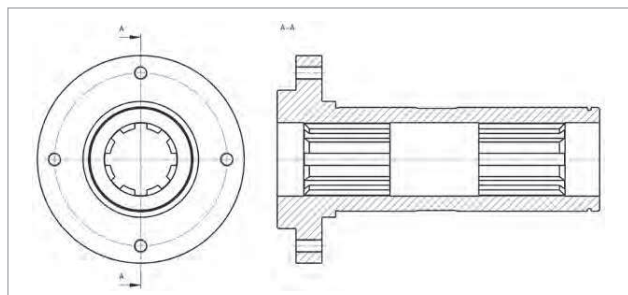
- Inner profile, broaching:
- Tool- \varnothing max. 90 mm
 - Work-piece- \varnothing max. 400 mm
 - Broaching length max. 200 mm

Wellen und Naben

- Innen-Profile, Ziehen:
- Werkstück- \varnothing max. 1 500 mm
 - Bohrungs- \varnothing max. 400 mm
 - Nutlänge max. 425 mm
 - Nutbreite max. 50 mm

Shafts and Hubs

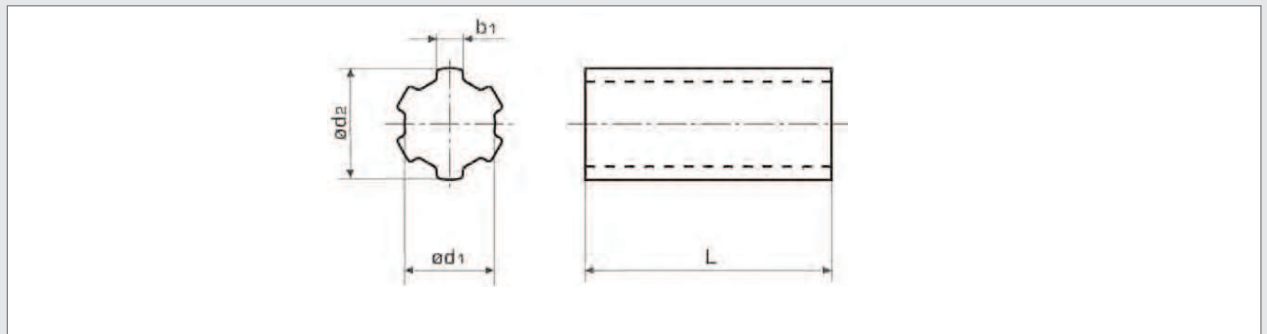
- Inner profile, drawn:
- Work-piece- \varnothing max. 1 500 mm
 - Bore- \varnothing max. 400 mm
 - Groove length max. 425 mm
 - Groove width max. 50 mm



Unsere Konstrukteure beraten Sie gerne bei der Realisierung Ihrer Anwendung - Fordern Sie uns heraus!

We offer more than competitive prices - contact our engineering department!

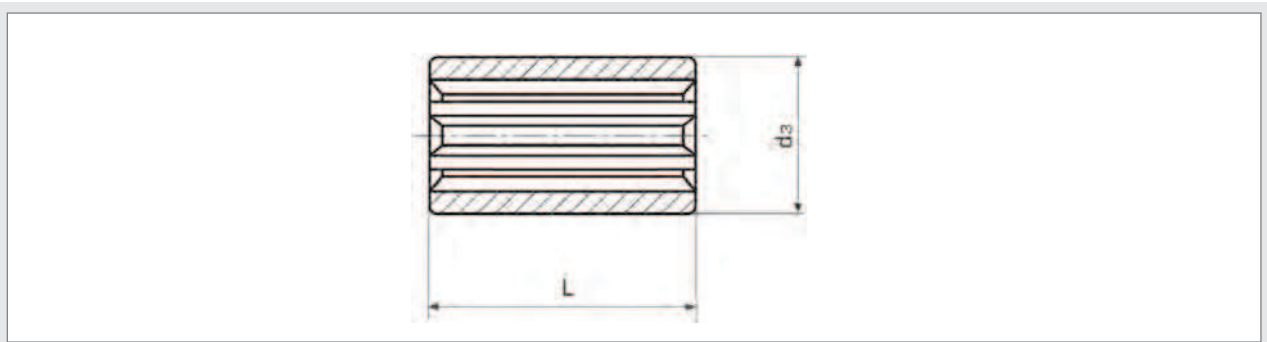
Keilwellen und Muffen nach DIN 5463/ISO 14 Splined Shafts and Sleeves acc. to DIN 5463/ISO 14



Keilwelle gezogen Werkstoff: 1.0503 (C45)

splined shafts drawn material: steel 1.0503 (C45)

| $a^* \times d_1 \times d_2$ | | b_1 | | | | | | | | Bestell Nr. |
|-----------------------------|---------|---|-------|-------------|-------------|-------------|-------------|-------------|-------------|----------------|
| 0-0,07 | | 0 | | | | | | | | Part No. |
| -0,08-0,27 | | -0,08 | | | | | | | | L = 4 500 [mm] |
| | | $\left[\frac{\text{kg}}{\text{m}} \right]$ | | L = 250 | L = 500 | L = 1 000 | L = 2 000 | L = 3 000 | | |
| 6 x 11 | x 14 | 3 | 0,95 | 294-111-025 | 294-111-050 | 294-111-100 | 294-111-200 | 294-111-300 | 294-111-450 | |
| 6 x 13 | x 16 | 3,5 | 1,29 | 294-113-025 | 294-113-050 | 294-113-100 | 294-113-200 | 294-113-300 | 294-113-450 | |
| 6 x 16 | x 20 | 4 | 1,91 | 294-116-025 | 294-116-050 | 294-116-100 | 294-116-200 | 294-116-300 | 294-116-450 | |
| 6 x 18 | x 22 | 5 | 2,45 | 294-118-025 | 294-118-050 | 294-118-100 | 294-118-200 | 294-118-300 | 294-118-450 | |
| 6 x 21 | x 25 | 5 | 3,24 | 294-121-025 | 294-121-050 | 294-121-100 | 294-121-200 | 294-121-300 | 294-121-450 | |
| 6 x 23 | x 28 | 6 | 3,96 | 294-123-025 | 294-123-050 | 294-123-100 | 294-123-200 | 294-123-300 | 294-123-450 | |
| 6 x 26 | x 32 | 6 | 5,01 | 294-126-025 | 294-126-050 | 294-126-100 | 294-126-200 | 294-126-300 | 294-126-450 | |
| 6 x 28 | x 34 | 7 | 5,82 | 294-128-025 | 294-128-050 | 294-128-100 | 294-128-200 | 294-128-300 | 294-128-450 | |
| 6 x 28,14 | x 34,94 | 8,64 | 6,72 | 294-129-025 | 294-129-050 | 294-129-100 | 294-129-200 | 294-129-300 | 294-129-450 | |
| 8 x 32 | x 38 | 6 | 7,43 | 294-132-025 | 294-132-050 | 294-132-100 | 294-132-200 | 294-132-300 | 294-132-450 | |
| 8 x 36 | x 42 | 7 | 9,30 | 294-136-025 | 294-136-050 | 294-136-100 | 294-136-200 | 294-136-300 | 294-136-450 | |
| 8 x 42 | x 48 | 8 | 12,34 | 294-142-025 | 294-142-050 | 294-142-100 | 294-142-200 | 294-142-300 | 294-142-450 | |
| 8 x 46 | x 54 | 9 | 15,30 | 294-146-025 | 294-146-050 | 294-146-100 | 294-146-200 | 294-146-300 | 294-146-450 | |



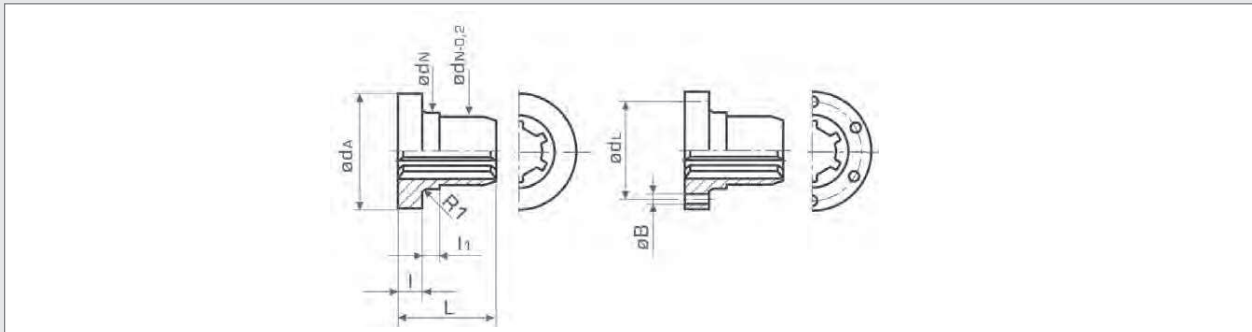
Muffen Werkstoff: 1.0727 (45 S 20 K)

splined sleeves material: steel 1.0727 (45 S 20 K)

| $a^* \times d_1$ | | $x d_2$ | L | d_3 | [kg] | Bestell Nr. |
|------------------|---------|---------|----|-------|------|--------------|
| | | | | | | Part No. |
| | | | | | | rund round |
| 6 x 11 | x 14 | | 40 | 30 | 0,18 | 294-011-004 |
| 6 x 13 | x 16 | | 40 | 35 | 0,24 | 294-013-004 |
| 6 x 16 | x 20 | | 40 | 40 | 0,30 | 294-016-004 |
| 6 x 18 | x 22 | | 40 | 42 | 0,31 | 294-018-004 |
| 6 x 21 | x 25 | | 40 | 45 | 0,36 | 294-021-004 |
| 6 x 21 | x 25 | | 60 | 38 | 0,32 | 294-021-006 |
| 6 x 23 | x 28 | | 60 | 50 | 0,60 | 294-023-006 |
| 6 x 26 | x 32 | | 60 | 60 | 1,00 | 294-026-006 |
| 6 x 28 | x 34 | | 60 | 70 | 1,40 | 294-028-006 |
| 6 x 29,7 | x 34,93 | | 60 | 75 | 1,65 | 294-029-006 |
| 6 x 29,7 | x 34,93 | | 80 | 50,8 | 0,65 | 294-029-008 |
| 8 x 32 | x 38 | | 60 | 75 | 1,50 | 294-032-006 |
| 8 x 36 | x 42 | | 60 | 80 | 1,75 | 294-036-006 |
| 8 x 42 | x 48 | | 60 | 90 | 2,20 | 294-042-006 |
| 8 x 46 | x 54 | | 60 | 90 | 2,05 | 294-046-006 |

a*: Anzahl der Keile | number of keys

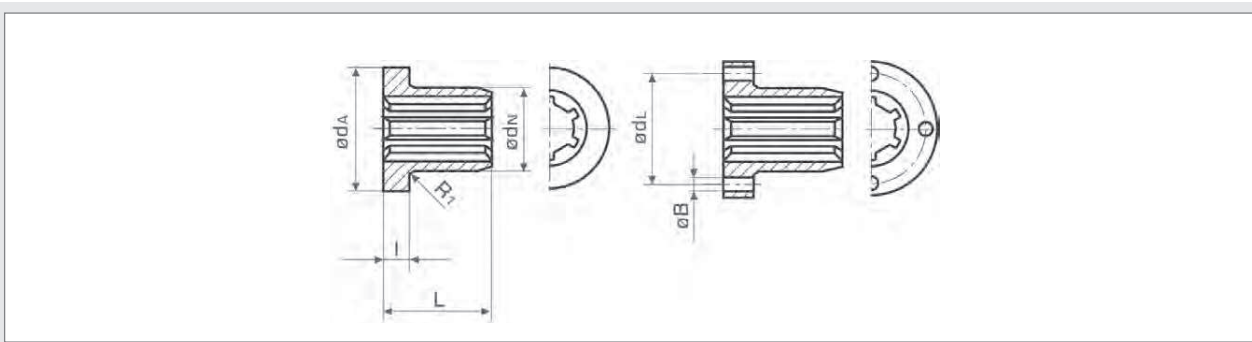
Keilwellen - Muffen nach DIN 5463/ISO 14 Splined Sleeves acc. to DIN 5463/ISO 14



Werkstoff: Spezialbronze

material: phospher-bronze

| a * x d ₁ x d ₂ | ød _A | ød _N (h7) | L | l | l ₁ | [kg] | Flansch Flange | | | Flansch, gebohrt Flange with holes | | |
|---------------------------------------|-----------------|----------------------|----|----|----------------|------|-------------------------|-----------------|------|---------------------------------------|-------------------------|--|
| | | | | | | | Bestell Nr. Part No. | ød _L | 6xøB | [kg] | Bestell Nr. Part No. | |
| 6 x 11 x 14 | 43 | 24 | 35 | 10 | 6 | 0,19 | 294-611-603 | 32 | 4,3 | 0,18 | 294-611-703 | |
| 6 x 13 x 16 | 43 | 24 | 35 | 10 | 8 | 0,17 | 294-613-603 | 32 | 4,3 | 0,16 | 294-613-703 | |
| 6 x 16 x 20 | 48 | 28 | 45 | 12 | 8 | 0,26 | 294-616-604 | 38 | 5,3 | 0,24 | 294-616-704 | |
| 6 x 18 x 22 | 55 | 32 | 45 | 12 | 10 | 0,35 | 294-618-604 | 45 | 6,4 | 0,32 | 294-618-704 | |
| 6 x 21 x 25 | 55 | 32 | 45 | 12 | 10 | 0,32 | 294-621-604 | 45 | 6,4 | 0,30 | 294-621-704 | |
| 6 x 23 x 28 | 62 | 38 | 50 | 14 | 10 | 0,50 | 294-623-605 | 50 | 6,4 | 0,47 | 294-623-705 | |
| 6 x 26 x 32 | 62 | 38 | 50 | 14 | 10 | 0,44 | 294-626-605 | 50 | 6,4 | 0,42 | 294-626-705 | |
| 6 x 28 x 34 | 75 | 48 | 60 | 15 | 11 | 0,84 | 294-628-606 | 62 | 8,4 | 0,80 | 294-628-706 | |
| 6 x 29,7 x 34,93 | 75 | 48 | 60 | 15 | 11 | 0,80 | 294-629-606 | 62 | 8,4 | 0,78 | 294-629-706 | |
| 8 x 32 x 38 | 75 | 48 | 60 | 15 | 11 | 0,70 | 294-632-606 | 62 | 8,4 | 0,68 | 294-632-706 | |
| 8 x 36 x 42 | 95 | 63 | 80 | 16 | 12 | 1,82 | 294-636-608 | 78 | 8,4 | 1,75 | 294-636-708 | |
| 8 x 42 x 48 | 95 | 63 | 80 | 16 | 12 | 1,50 | 294-642-608 | 78 | 8,4 | 1,48 | 294-642-708 | |
| 8 x 46 x 54 | 110 | 72 | 80 | 18 | 12 | 2,20 | 294-646-610 | 90 | 10,5 | 2,10 | 294-646-710 | |



Werkstoff: 1.0503 [C45]

material: steel 1.0503 [C45]

| a * x d ₁ x d ₂ | ød _A | ød _N (h7) | L | l | [kg] | Flansch Flange | | | Flansch, gebohrt Flange with holes | | |
|---------------------------------------|-----------------|----------------------|----|----|------|-------------------------|-----------------|------|---------------------------------------|-------------------------|--|
| | | | | | | Bestell Nr. Part No. | ød _L | 4xøB | [kg] | Bestell Nr. Part No. | |
| 6 x 11 x 14 | 41 | 22 | 30 | 8 | 0,19 | 294-011-603 | 30 | 4,3 | 0,18 | 294-011-703 | |
| 6 x 13 x 16 | 43 | 24 | 30 | 8 | 0,17 | 294-013-603 | 32 | 4,3 | 0,16 | 294-013-703 | |
| 6 x 16 x 20 | 52 | 28 | 40 | 9 | 0,21 | 294-016-604 | 38 | 5,3 | 0,20 | 294-016-704 | |
| 6 x 18 x 22 | 60 | 32 | 50 | 9 | 0,31 | 294-018-605 | 46 | 5,3 | 0,29 | 294-018-705 | |
| 6 x 21 x 25 | 62 | 34 | 50 | 10 | 0,36 | 294-021-605 | 48 | 6,4 | 0,33 | 294-021-705 | |
| 6 x 23 x 28 | 68 | 40 | 60 | 10 | 0,53 | 294-023-606 | 54 | 6,4 | 0,50 | 294-023-706 | |
| 6 x 26 x 32 | 70 | 42 | 60 | 10 | 0,50 | 294-026-606 | 56 | 6,4 | 0,48 | 294-026-706 | |
| 6 x 28 x 34 | 78 | 48 | 70 | 12 | 0,80 | 294-028-607 | 63 | 8,4 | 0,78 | 294-028-707 | |
| 6 x 29,7 x 34,93 | 80 | 50 | 70 | 12 | 0,85 | 294-029-607 | 65 | 8,4 | 0,82 | 294-029-707 | |
| 8 x 32 x 38 | 80 | 50 | 70 | 12 | 0,80 | 294-032-607 | 65 | 8,4 | 0,78 | 294-032-707 | |
| 8 x 36 x 42 | 93 | 58 | 80 | 14 | 1,32 | 294-036-608 | 73 | 8,4 | 1,30 | 294-036-708 | |
| 8 x 42 x 48 | 95 | 60 | 80 | 16 | 1,30 | 294-042-609 | 75 | 10,5 | 1,25 | 294-042-709 | |
| 8 x 46 x 54 | 99 | 65 | 80 | 16 | 1,40 | 294-046-610 | 80 | 10,5 | 1,30 | 294-046-710 | |

a*: Anzahl der Keile | number of keys

